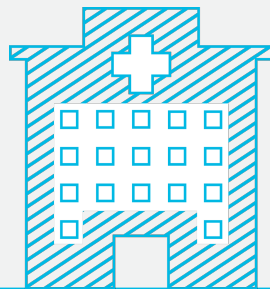


Reliable, scalable and proven

CheckWare specifically developed for palliative care, hospitals and research projects using standardised clinical assessments. The solution is web based and automates the collection, scoring and outcome reporting of assessment test results. This provides easier collection and follow up of information used in palliative care, clinical work and research projects. CheckWare is reliable, scalable and proven and is already used at over 250 health organisations.



250 HEALTH ORGANISATIONS AND RESEARCH
PROJECTS HAVE USED OUR SOLUTION

All clinical assessments in one solution

CheckWare has the distribution rights for more than 1000 clinical assessments, interview forms and screening tools. These are available in one digital solution and CheckWare ensures that only authorised and quality assured versions of all tests are used within the CheckWare system.

The CheckWare system covers assessments in palliative care and mental and physical care as well as substance abuse treatment, chronic diseases, complex disorders and lifestyle diseases. Pain management, quality of life measurements, PROM and PREM are also commonly used.

At CheckWare we continuously add accessibility to new tests and our ambition is to offer all tests and assessment instruments that you may need. You also have the ability to create your own assessment forms and questionnaires and use these in the system.

1000+ CLINICAL ASSESSMENTS, INTERVIEW FORMS
AND SCREENING TOOLS

Specific palliative care assessment

Using the Outcome Assessment and Complexity Collaborative (OACC) measures developed and proposed by the Cicely Sanders Institute, CheckWare has created an eHealth solution for palliative health care organisations to digitally assess (as a minimum):

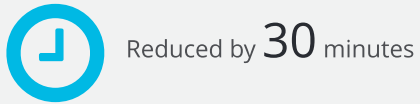
- Patient Demographics
- Phase of Illness
- Australia-modified Karnofsky Performance Status (AKPS)
- The Integrated Palliative care Outcome Scale (IPOS), 3 and 7 day versions

This can be achieved on any device (Apple, Android, Windows) and also enables patient self-reporting from home.

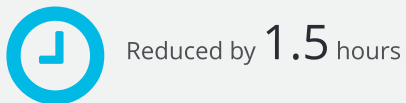
CheckWare is used to immediately validate, compare and report on this outcome data to help improve the overall effectiveness of the care and support provided.

It should be stressed that CheckWare is intended to compliment and integrate with your existing patient record systems and not to replace them. Additionally CheckWare automatically collects the palliative care minimum dataset data, with the option to submit the data directly to Public Health England.

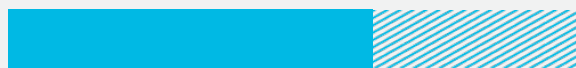
TIME SPENT PER TEST



EVALUATION TIME PER PATIENT



COST CONNECTED TO HUMAN RESOURCES



Reduced by **64** %

Digital self-reporting frees resources

Using mobile technologies CheckWare can, where appropriate, empower the patient to 'self-report' between clinical appointments – allowing clinicians to prioritise waiting lists or be automatically informed of any patient health changes or deteriorations.

Patient self-reporting can be vitally important to help the patient to feel that they are taking an active part in their own care.

Patients, relatives, health care personnel and other close associates can complete assessments. The assessment can be completed from home or at the hospital and the clinician gets immediate access to scored and aggregated clinical reports showing status and development over time.

The solution enables planned and controlled use of assessment tools and ensures that the patient will remember to complete the assessment in a timely manner whilst removing chance of errors.

One study showed that the cost connected with processing data was reduced by 64% when using CheckWare compared to using paper-based forms.

Another study showed that a clinic using CheckWare reduced time spent on each test by 30 minutes, and evaluation time per patient was reduced by 1.5 hours. This means that a clinic treating 10,000 patients answering 6 assessments each can free up to 45,000 hours.

Adapted to any care pathway

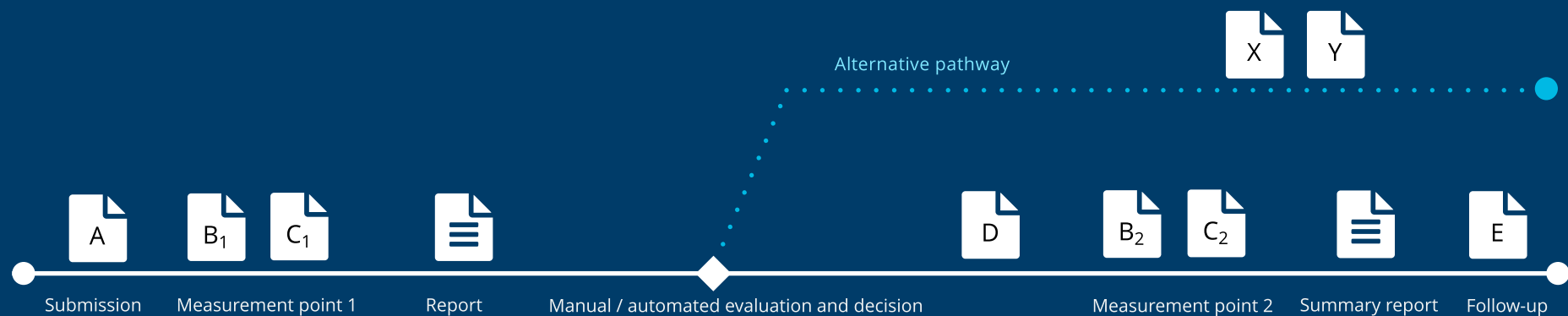
CheckWare is used in the evaluation, treatment and follow up care of patients. The hospital or clinic can use predefined pathways or adapt CheckWare to fit their own care pathways. When using its easy, flexible and powerful modeling tool, the solution can be adapted to the clinical work:

- Selecting which questionnaires, assessments and any exercises to be used per pathway.
- Both patients, health care personnel, relatives and other close associates can reply to assessments.
- Individual adaptation of data collection in the care pathway based on single answers, scores or test results.
- Role-based access to scores and the possibility for different result reports for clinicians and patients.
- Presentation of information to the patient in the form of text, video and pictures, depending where in the care pathway the patient is.

- Priority lists for admission of patients based on results of screening or monitoring.
- Automated distribution of assessment test to each patient for completion and submission.

By using assessments before, during and after treatment, CheckWare gives an automatic overview of the patient's development throughout the process. In addition, PREM and PROM can give the patient's opinion about the treatment and its effect. In total this gives good documentation on the treatment results, both individually and on group level.

The solution takes into consideration the fact that a patient can undergo multiple concurrent treatments. This enables data collection across all treatment plans, clinical responsibility for the individual treatment and also access to a total view of all the data for the individual patient.



Information registered only once

Information used for clinical work, clinical studies and outcome reporting is only registered once. Assessment scores and structured data can be integrated into electronic patient record systems and research data is automatically transferred to analytical tools. CheckWare outcome measures data can also be transmitted to national quality and minimum dataset systems.

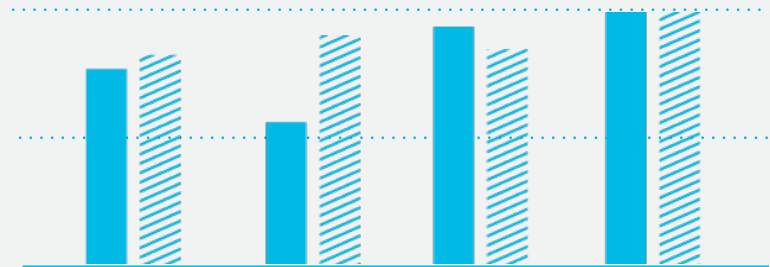
"It will be faster and easier to access the necessary information. The data should be easily accessible for patient care management information, reporting and research. At the same time, privacy will be improved due to better control of sensitive information. It is particularly important to increase patient participation and self-management in the treatment process."

Ola Jøsendal

Department director
Haukeland University Hospital

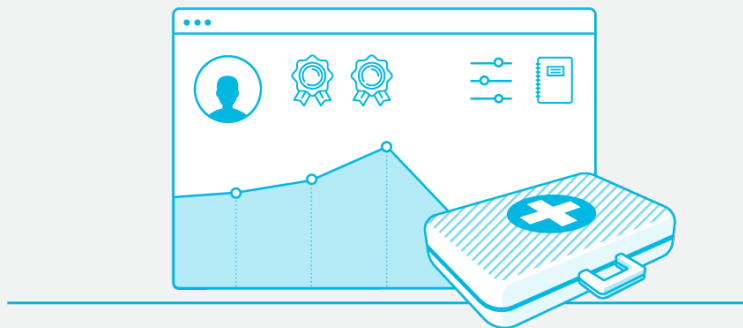
Management information for improved treatment quality

Using CheckWare Quality Portal and other data warehousing solutions, aggregated data can give quality information on treatment results for a clinic or a hospital. Collecting de-identified data enables comparison between treatments and departments in clinics. In this way clinical data contributes by giving management information for evaluation of operation.



Digital program for self-management

In addition to being the market leader for self reporting, CheckWare offers a platform for co-operation and self management. Professionals developing digital based treatment programs with diagnosis adapted content and workflow can implement these as treatment programs in CheckWare. To quickly being able to offer such programs to the patients, CheckWare has functionality for goals and actions, diary and exercises, as well as the possibility to offer information to the patients through text, illustrations and video.



Always available

CheckWare makes it easy to register data on any digital device. The solution adapts to screen size and can be used on a mobile phone, tablet or pc. The solution is available from the internet and can be used by respondents anywhere and at any time.



Information security

CheckWare is approved by the HSCIC Operational Security Team and connected to N3. There are strict regulations for access to data and CheckWare offers a flexible model for roles and access control on functional level. All activity is logged in the system. Clinicians and respondents get access to the system via the web through the highest security levels set.

CheckWare is approved for use through several risk and vulnerability analyses and is also approved by regional ethical committees for use in clinical research projects.






About CheckWare

CheckWare is an eHealth company established by health professionals. We have delivered solutions to both public and private health organisations since 2007. The company has offices both in UK and in Norway.

CheckWare is a secure and reliable eHealth solution with documented effect, and is provided by a professional and experienced organisation.

Our customers include King's College London, Dorset NHS Foundation Trust, Surrey and Borders Partnership NHS Foundation Trust and the Leicestershire Partnership NHS Trust.

-  www.checkware.com
-  info@checkware.com
-  +44 402033972700